

2018





THE TRUTH IS ON THE WATER



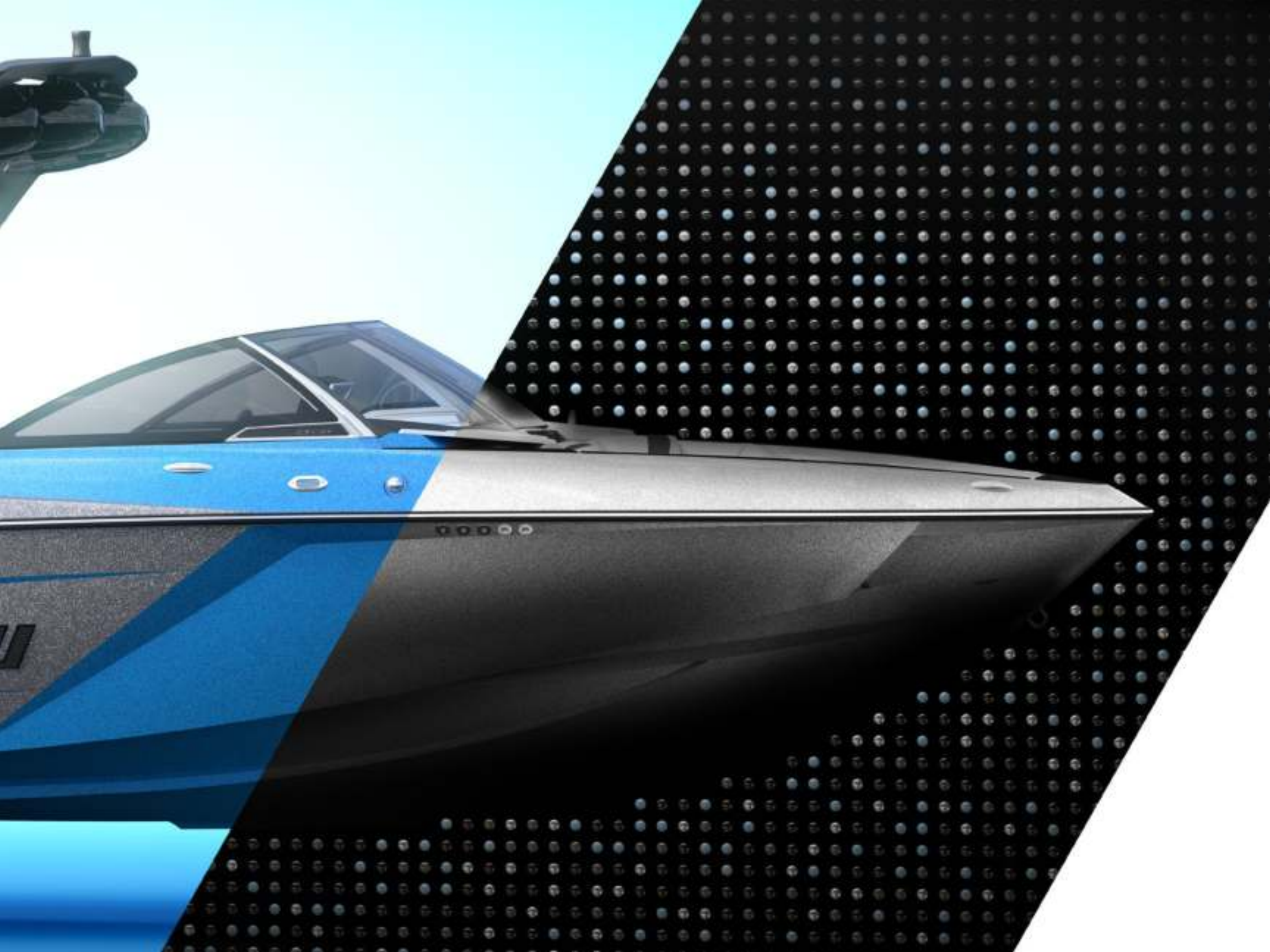
# DISCOVER THE DIFFERENCE

Malibu Boats is the world's #1 towboat manufacturer, producing one out of every two boats purchased globally each year. That success is due to our intense focus on reimagining the boundaries of what is possible on the water, so that families and friends can come together to truly enjoy a life without limits.

#TheTruthIsOnTheWater



*Malibu*





# SETTING WAKE SPORTS TRENDS SINCE '99

Malibu debuted the Wakesetter in 1999, a wakeboard-specific boat featuring the Wake Hull, original Wedge hydrofoil, ballast bags and tower. It was the first wakeboard boat on the market, with a hull explicitly designed for wake generation and shaping, equipped with first generation wake simulation technology. Nearly two decades later, the Malibu Wakesetter line continues to set the standard for wake and wave creation, with eight models ranging 20 to 25 feet in length.















**Malibu**

WAKE SET



# TABLE OF CONTENTS

Dedication To Innovation	14
Malibu Story	16
Integrated Surf Platform	18
Surf Gate	20
Power Wedge II	22
Viper II Command Center	24
The Malibu Fleet	26
Response TXi	28
Wakesetter Series	34
M235	82
Trailers	88
Towers	90
Featured Options	92
Power	94
Warranty	96
Malibu V-Drive	97
Malibu FibECS	98
Colors	100
Standard Packages + Options	102
Malibu Pro Team	104
Boat Builder	112





# DEDICATION TO INNOVATION

The Malibu history is a timeline of watersports evolution. We began as a ski boat innovator in the early 1980s, and in the 1990s created the first wakeboard hull and Wedge hydrofoil. In 2013, we set a new industry standard with Surf Gate, the world's first and best wave maker. Today, the exclusive Integrated Surf Platform combines our wake and surf generating technologies to deliver the ultimate customized on-the-water experience for riders of every ability level.



1982 ··· 1984 ··· 1989 ····· 1991 ····· 1993 ····· 1996 ··· 1998 ····· 1999 ····· 2001 ····· 2004 ····· 2005

- Malibu is born in California
- The Malibu Skier
- Expanded production to Tennessee facility
- Euro-f3 Series ski boats, inspired by European car designs
- Malibu's 18-function Electronic Management System
- First swivel-head ski pylon
- Computron, the watersports world's first onboard computer system
- Fiberglass Engine Chassis System (FibECS)
- Monsoon engines, with electronic fuel injection
- Echelon, Boat of the Year
- The Malibu Sport V-drive
- Debuted Wedge hydrofoil technology
- Multisport Diamond Hull
- Wakesetter becomes first wakeboard-specific boat
- MSCAN navigation system, with GPS
- Malibu beam jump to 102 inches
- Gorilla fins added to V-drives
- 23 LSV becomes best-selling towboat of all time
- 21 VLX named Towboat of the Year





# NEW FOR 2018

New features for 2018 models include:

- Surf Band with volume control
- Extended bimini
- REV10 Speakers
- MultiZone RGB lighting\*

\*Only available on M235

## ..... 2006 ..... 2009 ..... 2010 ..... 2012 ..... 2014 ..... 2015 ..... 2016 ..... 2017 .....

- Electronic Power Wedge introduced

- Malibu creates Axis Wake Research

- MaliView, with a 6.5-inch multifunction screen

- CEO Jack Springer joins Malibu

- The G3 tower, designed and built in-house

- Pickle-fork MXZ Series
- TXi Response introduced
- Surf Gate, the ultimate wakesurf system and Innovation of the Year

- New 22 VLX introduced with updated multisport ride/surf/ski hulls

- Visual and audible wakesurf transfer signaling

- Introduced Wake Plus Hull, designed specifically for Surf Gate

- Malibu introduces the most technological advances in one model year in the history of the watersports industry, including the Power Wedge II, Command Center, G4 Tower and a host of other industry-leading innovations

- 23 LSV remains best-selling towboat of all time

- Malibu Trailers introduced

- The 25 LSV launched as Malibu's biggest boat ever

- The M235 is introduced as Malibu's ultra-premium model and official towboat of the Evolution Pro Series

- Integrated Surf Platform wins Boating Industry's Top Product award

- All-new 21 VLX launches

- Command Wheel wins Innovation of the Year at WSIA Summit Leadership Awards

- G3.5 Tower introduced

# LIFE WITHOUT LIMITS

Malibu Boats are designed to deliver an unforgettable experience on the water for you, your family and friends. It's what we call a Life Without Limits.

## THE MALIBU STORY

In 1982, six passionate waterskiers looked for their ideal towboat, but soon realized it didn't exist. So, they decided to build one. They were disruptors.

Malibu Boats emerged from that group's shared dedication to innovation, design and performance, and it's been our guiding principle ever since. Year after year, we continue to lead the towboat industry from the front.

Today, we are the world's #1 towboat manufacturer, with over 600 highly skilled technicians handcrafting Malibu and Axis Wake Research towboats in Loudon, Tenn., and Albury, New South Wales, Australia.

And while we relish our history, we keep the past in our rearview—along with the competition. Instead, we are keenly focused on our next industry-transforming innovation. And the one after that.

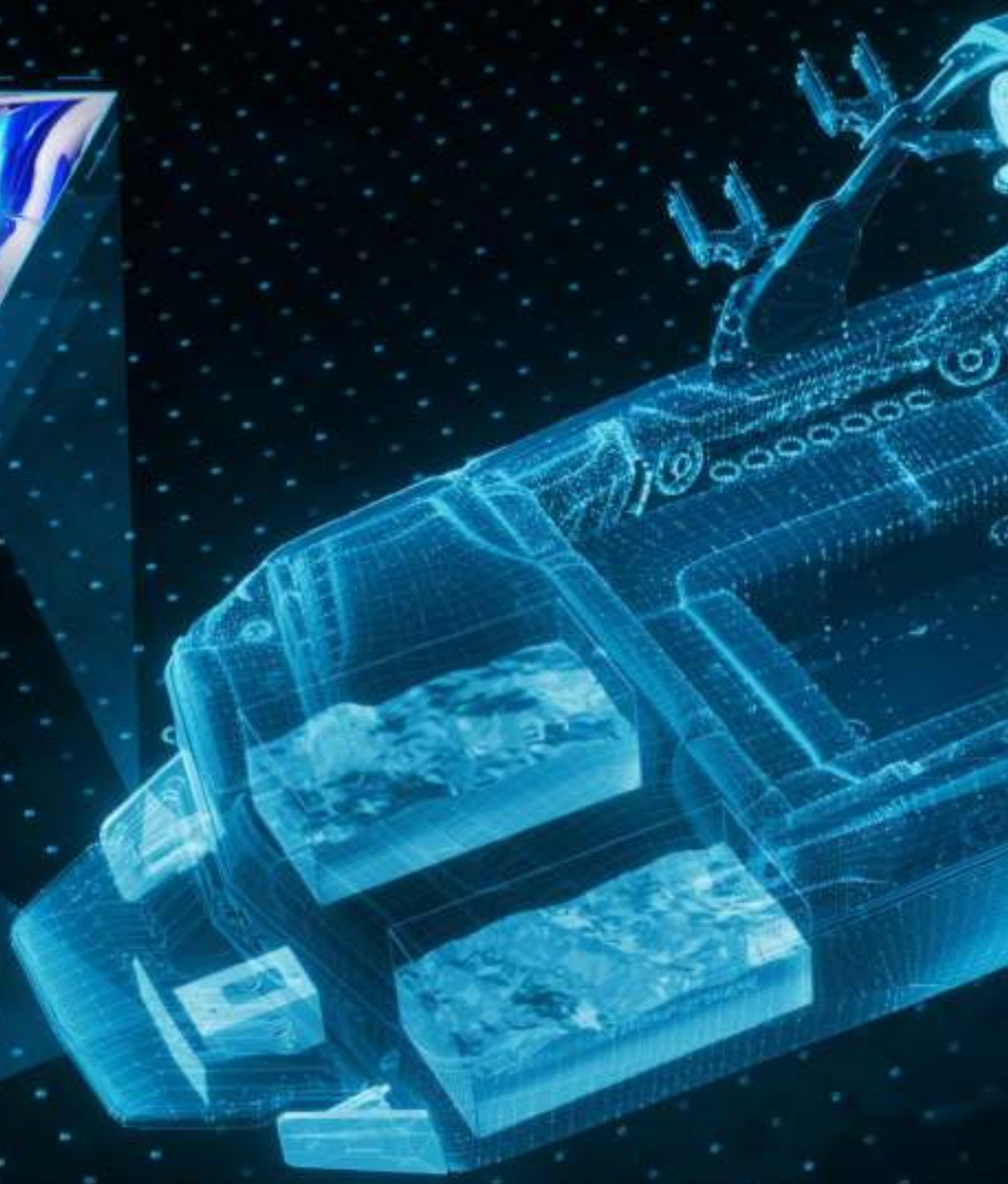
For we are disruptors.



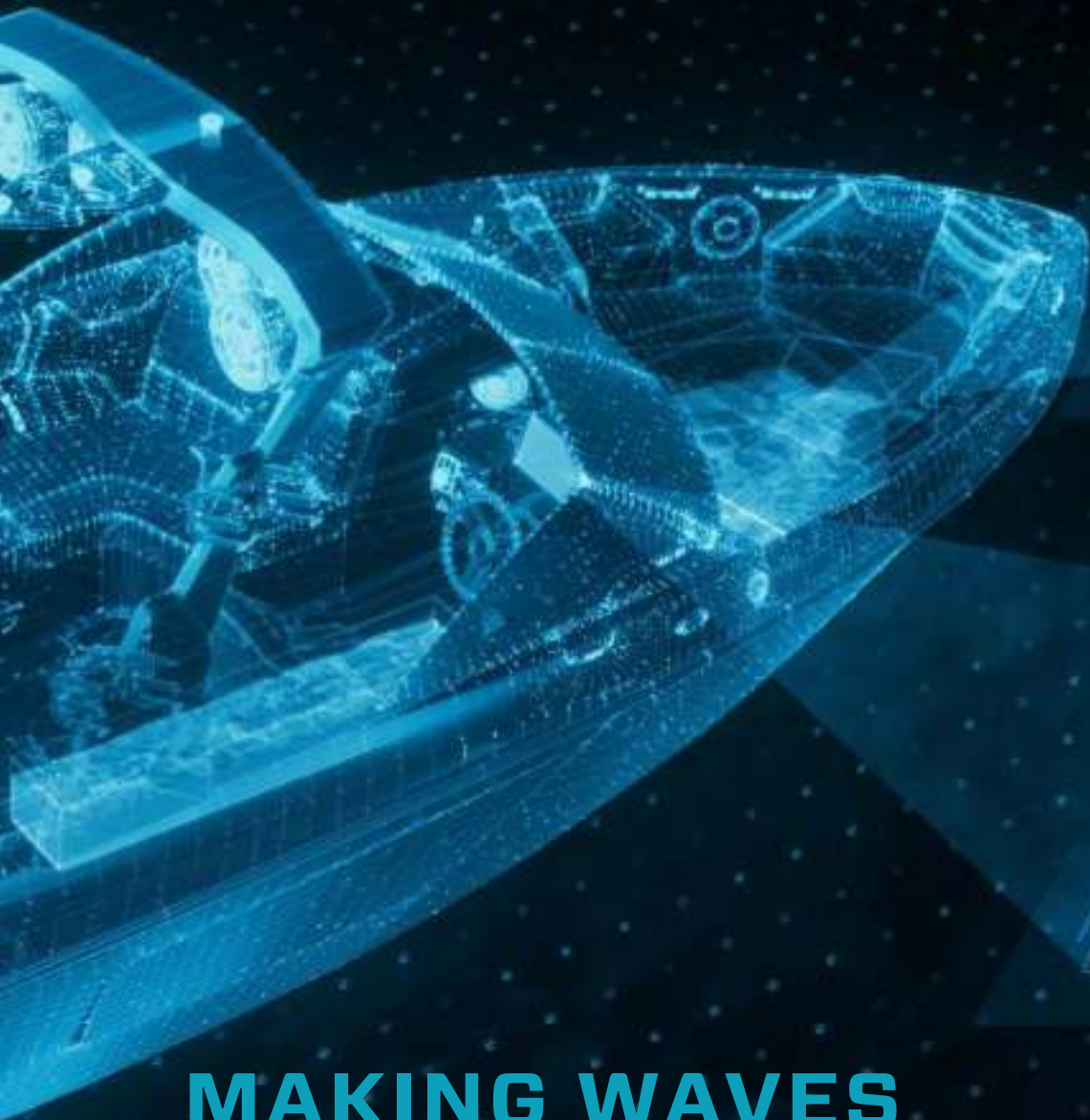




SURF GATE



POWER WEDGE II



## MAKING WAVES

Malibu's Integrated Surf Platform is the culmination of years of research and development. The proprietary I.S.P. system includes three technologies that have revolutionized professional and recreational wakesurfing and wakeboarding—Surf Gate, Power Wedge II and Surf Band.

The Power Wedge II hydrofoil has 22 percent more surface area than its predecessor and instantly adds up to 1,500 pounds of simulated ballast for maximum wake-generating ability. It also offers the industry's widest range of customization, enabling Malibu owners to control the size, length and shape of the wake from the Viper II Command Center's 12-inch touchscreen.

Meanwhile, the wave-making power of Malibu's revolutionary Surf Gate is unparalleled. The driver can quickly and easily engage the hydraulic Surf Gate from the Viper II Command Center for instant wave creation. And with Surf Band, wake and wave riders can remotely control Power Wedge II, Surf Gate, boat speed and tower speaker volume.

# WRIST CONTROL

Malibu's exclusive Surf Band wrist remote gives riders the power to control all surf related settings from the water. Just tap as you ride to customize the Power Wedge II, Surf Gate or boat speed. And for 2018, we've added the ability to control tower speaker volume from Surf Band.





## WAVE WHISPERER

For decades, wakesurfers tried just about everything to make a wave behind a boat. Then in 2013, Malibu revolutionized the sport of wakesurfing with Surf Gate. High-speed hydraulic actuators drive the Surf Gate, redirecting the wake to instantly create an endless wave on either side of the boat. Tap the Command Center touchscreen or use the Sport Dash™ to adjust the wave's size, length and shape. No other technology can compare to Surf Gate's capabilities or customization.



## POWER BALLAST

Malibu's ballast-generating technology is unmatched, and that's important if you want to create and customize big wakes and waves. Power Wedge II is a patented hydrofoil—equipped with hydraulic actuators—that produces up to 1,500 pounds of simulated ballast. It's the world's most customizable hydrofoil, with almost limitless settings to meet the needs of every rider. Drivers can easily and quickly adjust Power Wedge II settings from the Command Center touchscreen or with the Sport Dash dial, while riders can control it from the water with Surf Band.







## COMMAND CONTROL

Malibu's water-manipulation technology is built upon complex hydrodynamic science, but it's simple to use. The Viper II Command Center is standard on all Malibu Wakesetter and M-series models, enabling fingertip control of the ballast, Power Wedge II, Surf Gate, navigation, rider presets, media and more.

- Industry-leading 12-inch digital touchscreen with customizable menus and rider presets
- 7-inch MTC touchscreen operates stereo, lights, heater, bilge, blower and GPS
- Control the Power Wedge II, Surf Gate, speed and stereo from the optional Sport Dash
- Optional Command Wheel places Power Wedge II, Surf Gate, speed and stereo controls in centered console for added safety and convenience
- Watch riders behind the boat with the optional wakeview camera



## COMMAND CONVENIENCE

- When you're headed back to shore, the Command Center's "Go Home" button releases all ballast, disengages Surf Gate, stows Power Wedge II and deactivates cruise control.
- The Sport Dash option includes an expandable smartphone cradle for easy access.
- Keep your valuables safe and phone charged in the USB equipped Dry-Storage Box.



## RESPONSE TXi

LENGTH	20'6"/6.25m
BEAM	95"/2.41m
DRAFT	22"/0.56m
CAPACITY	Open Bow 7, Closed Bow 5
FUEL	40 gal/151L
WEIGHT	3,100 lbs./1,406kg
HULL TYPE	T-Cut Diamond
TORQUE	410-450ft-lbs.

## 20VTX

LENGTH	20'/6.01m
BEAM	98"/2.5m
DRAFT	27"/0.7m
CAPACITY	11 people
FUEL	38 gal/144L
WEIGHT	3,500 lbs./1,588kg
HULL TYPE	T-Cut Diamond
TORQUE	410-450ft-lbs.
MAX BALLAST	3,560 lbs.*

## 21MLX

LENGTH	21'/6.4m
BEAM	98"/2.5m
DRAFT	27"/0.7m
CAPACITY	14 people
FUEL	48 gal/182L
WEIGHT	4,500 lbs./ 2,041 kg
HULL TYPE	Wake Plus
TORQUE	410-450ft-lbs.
MAX BALLAST	3,952 lbs.*

## 21VLX

LENGTH	21'/6.4m
BEAM	98"/2.5m
DRAFT	27"/0.69m
CAPACITY	13 people
FUEL	48 gal/182L
WEIGHT	4,000 lbs./1,814kg
HULL TYPE	Wake Plus/Diamond
TORQUE	410-450ft-lbs.
MAX BALLAST	3,690 lbs.*

## 22VLX

LENGTH	21'10"/6.65m
BEAM	102"/2.6m
DRAFT	27"/0.69m
CAPACITY	14 people
FUEL	48 gal/182L
WEIGHT	4,300 lbs./1,950kg
HULL TYPE	Wake Plus/Diamond
TORQUE	410-575ft-lbs.
MAX BALLAST	3,800 lbs.*

\*MAX BALLAST includes four hard tanks, Power Wedge II and approved Plug 'n Play bags (see dealer).



## 23LSV



## 25LSV



## 22MXZ



## 24MXZ



## M235

LENGTH	23'/7.01m
BEAM	102"/2.6m
DRAFT	27"/0.69m
CAPACITY	15 people
FUEL	65 gal/246L
WEIGHT	5,000 lbs./2,268kg
HULL TYPE	Wake Plus/Diamond
TORQUE	410-575ft-lbs.
MAX BALLAST	4,240 lbs.*

LENGTH	25'/7.62m
BEAM	102"/2.6m
DRAFT	32"/0.81m
CAPACITY	19 people
FUEL	77 gal/291L
WEIGHT	5,600 lbs./2,540kg
HULL TYPE	Wake Plus
TORQUE	450-575ft-lbs.
MAX BALLAST	4,825 lbs.*

LENGTH	22.5"/6.68m
BEAM	102"/2.59m
DRAFT	27"/0.69m
CAPACITY	15 people
FUEL	48 gal/182L
WEIGHT	4,850 lbs./2,200kg
HULL TYPE	Wake Plus
TORQUE	410-575ft-lbs.
MAX BALLAST	4,440 lbs.*

LENGTH	24.5"/7.44m
BEAM	102"/2.59m
DRAFT	32"/0.81m
CAPACITY	18 people
FUEL	77 gal/291L
WEIGHT	5,500 lbs./2,495kg
HULL TYPE	Wake Plus
TORQUE	450-575ft-lbs.
MAX BALLAST	4,830 lbs.*

LENGTH	23.5"/7.14m
BEAM	102"/2.59m
DRAFT	32"/0.81m
CAPACITY	17 people
FUEL	78 gal/295L
WEIGHT	6,200 lbs./2,812kg
HULL TYPE	Wake Plus
TORQUE	575 ft-lbs.
MAX BALLAST	4,960 lbs.*

# RESPONSE TXi

---

The original Malibu Response TXi is a legendary ski boat, pulling pro riders to 10 world records. Now, the all-new TXi is designed to deliver the next generation of dominance—and it's already rewriting the record books. The three-finned T-Cut Diamond Hull creates astoundingly soft, flat wakes, and the TXi's laser-like tracking and precision handling enable it to pull with incredible consistency. New for 2018, the TXi has been built with Advanced Rudder Control—adjust the steering load and drive ski courses with the utmost consistency.

Blending function with renowned Malibu craftsmanship and bold styling, the TXi comes equipped with an acrylic walkthrough windscreen, Dry-Storage Box with USB charging port, side coaming pads with storage beneath and Billet aluminum grab handles, folding ski racks and storage compartment lids. Choose between the Response TXi or the Response TXi Malibu Open Edition, which includes a 7-inch touchscreen, Zero Off Cruise Control and Billet aluminum accents. Both models are available in a traditional five-seat closed bow or seven-seat open bow configuration.

- The new benchmark for performance ski boats
- Designed for all skill levels
- Three-Finned T-Cut Diamond Hull
- Lifetime Hull Warranty
- Traditional European Closed Bow or Seven-Seat Open Bow
- Malibu Open Edition available in both bow options









# RESPONSE TXi





# WAKESETTER 20VTX

---

The traditional bow Malibu 20 VTX is the ideal crossover towboat that works for the entire family. With seating for up to 11, it is tournament approved for waterskiing while meeting the needs of wakeboarders and wakesurfers. The 20 VTX features our exclusive T-Cut Diamond Multisport Hull, which lays down world-class slalom flats so you can take advantage of the center-pull ski pylon, or use the Standard Hard Tank Ballast system to create a big, surfable wake. Choose the optional Power Wedge II hydrofoil and Surf Gate for even greater ballast simulation and wake/surf customization.

- Easy to trailer and garage
- Seating for 11
- T-Cut Diamond Multisport Hull
- Viper II Command Center
- Traditional bow design
- 3-event certified
- Center-pull ski pylon
- G3.5 Tower
- Optional Integrated Surf Platform







# WAKESETTER 20VTX







# WAKESETTER 21MLX

---

An incredible Malibu value, the well-equipped 2018 21 MLX is priced at just \$82,995.\* This 21-foot pickle-fork powerhouse seats up to 14 and is the ideal towboat for families with surfers and boarders. With standard features such as Power Wedge II, Surf Gate, Surf Band, Wake Plus Hull and the Hard Tank Ballast System, it delivers customized wakes and waves for every rider. The 21 MLX also comes standard with the Viper II Command Center, G3.5 Tower, bimini top, canvas cover and matching Malibu Trailer.

- Incredible Malibu value
- Seating for up to 14
- Wake Plus Hull
- Pickle-fork bow
- Hard Tank Ballast System
- Integrated Surf Platform
- Viper II Command Center
- G3.5 Tower
- Bimini top
- Canvas cover
- Matching Malibu Trailer

\* Price does not include freight and dealer prep







WAKESETTER  
**21MLX**





# WAKESETTER 21VLX

---

The ultimate Malibu value, the 2018 21 VLX comes well-equipped for just \$79,995.\* This 21-foot beauty seats up to 13 and is designed for families with skiers, surfers and boarders. With standard features such as Power Wedge II, Surf Gate, Surf Band, Hard Tank Ballast System, Viper II Command Center, G3.5 Tower, canvas cover and bimini top, plus a matching Malibu Trailer, the 21 VLX is the complete multisport towboat. Choose the Diamond Multisport Hull for crossover performance or select the Wake Plus Hull for wake and surf specialization.

- Ultimate Malibu value
- Seating for 13
- Wake Plus or Diamond Multisport Hull
- Traditional bow design
- Integrated Surf Platform
- G3.5 Tower
- Bimini top
- Viper II Command Center
- Matching Malibu Trailer

\* Price does not include freight and dealer prep



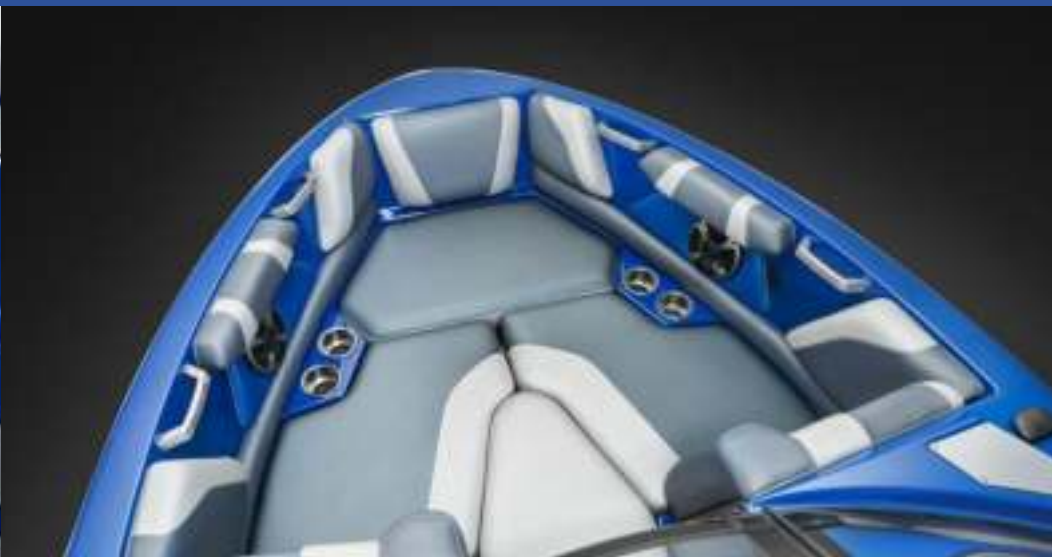






WAKESETTER  
**21V LX**





# WAKESETTER 22VLX

---

With your choice of the Diamond Multisport or Wake Plus Hull, the 22 VLX is one of our most agile and spacious crossover towboats. It outperforms many of the top ski boats and wakeboard boats and offers ample room and luxury for any family. The 22 VLX seats up to 14 and features classic Malibu amenities such as a plush, hand-stitched wraparound interior, durable but comfortable soft grip flooring, Viper II Command Center and the G3.5 Tower.

- Amazing agility
- Seating for 14
- Wake Plus or Diamond Multisport Hull
- Traditional bow
- Plush Wraparound Upholstery
- G3.5 Tower
- Viper II Command Center
- Digitally tuned Zoned Audio
- Optional Integrated Surf Platform
- Optional power helm seat
- Optional hot-water shower









# WAKESETTER 22VLX





# WAKESETTER 23LSV

---

The Malibu 23 LSV is the world's #1 selling towboat of all time because of its perfect combination of performance, innovation and on-the-water versatility. With seating for up to 15, it delivers robust wakes and waves for riders of all ages and is available with either the Wake Plus Hull or Diamond Multisport Hull for crossover enthusiasts. For 2018, we've deepened both hulls for increased wake creation and storage, and we added a rear-facing WakeView bench seat and the MaxBallast L-shaped tank system.

- All-new for 2018
- Seating for 15
- Deeper Wake Plus Hull for more storage
- Optional Diamond Multisport Hull for versatility
- MaxBallast L-Shaped Tanks
- Rear-facing WakeView bench seat
- Plush Wraparound Upholstery
- Transom Walkover Pad
- G3.5 Tower
- Viper II Command Center
- Digitally tuned Zoned Audio
- Optional Integrated Surf Platform
- Optional Plug 'n Play







# WAKESETTER 23LSV







# WAKESETTER 25LSV

---

The 25 LSV is our biggest, brawniest towboat—if you like traveling with lots of people while throwing up huge wakes, this is your Malibu. With seating for 19, there's room for the whole family, and then some. The 25 LSV features a Wake Plus Hull and maxes out at 4,825 pounds of ballast with the optional Integrated Surf Platform. Despite its size, the 25 LSV cuts through the water effortlessly and maneuvers like a point guard. Malibu luxury abounds, including a WakeView bench seat, plush wraparound interior, Viper II Command Center and digitally tuned Zoned Audio.

- Maximum space & agility
- Seating for 19
- Wake Plus Hull
- Standard Monsoon 450 engine
- Rear-facing WakeView bench seat
- Plush Wraparound Upholstery
- Standard G3.5 Tower
- Viper II Command Center
- Digitally tuned Zoned Audio
- Optional Integrated Surf Platform
- Optional Plug 'n Play







# WAKESETTER 25LSV





# WAKESETTER 22MXZ

---

The 22 MXZ is highlighted by a sleek but roomy pickle-fork design, with seating for up to 15 people. It offers Malibu's legendary handling while generating heavy wakes with the standard MaxBallast L-shaped tanks and ballast measurement system. The 22 MXZ is loaded with Malibu luxury and technology, including hand-fitted upholstery, the Viper II Command Center and digitally tuned Zoned Audio.

- Amazing agility
- Seating for 15
- Wake Plus Hull
- Folding Bow Ladder
- MaxBallast L-Shaped Tanks
- G3.5 Tower
- Digitally tuned Zoned Audio
- Optional Integrated Surf Platform
- Optional Plug 'n Play









# WAKESETTER **22MXZ**





# WAKESETTER 24MXZ

---

With maximum room and maneuverability, the Malibu 24 MXZ is the choice for big families who want a towboat that handles like a sports car. The pickle-fork bow boasts a sleek design and has plenty of space for lounging, while the cabin is appointed with an abundance of standard luxury features. Amenities include a Wake Plus Hull and MaxBallast L-shaped tanks for big wakes and waves, walkthrough transom, WakeView bench seat, plush wrap-around interior with handstitched vinyl upholstery and the Viper II Command Center. For 2018, the optional MaliBoost™ Directional Docking & Maneuvering System is available on the 24 MXZ.

- Incredible space & agility
- Seating for 18
- Wake Plus Hull
- Folding Bow Ladder
- MaxBallast L-Shaped Tanks
- Standard Monsoon 450 engine
- Rear-facing WakeView bench seat
- Plush Wraparound Upholstery
- Transom Walkthrough
- Standard G3.5 Tower
- Viper II Command Center
- Digitally tuned Zoned Audio
- Optional Integrated Surf Platform
- Optional MaliBoost Directional Docking & Maneuvering System









# WAKESETTER 24MXZ





# M235

---

Already the world's premier ultra-premium wakeboarding and wakesurfing towboat, the new M235 is loaded with even more technology and luxury. For 2018, the M235 is equipped with the exclusive new Malibu MultiZone RGB Lighting Controller™, a breakthrough in onboard illumination that allows the user to control the settings of up to three zones of RGB lights.

The 23-foot, 17-passenger M235 also delivers best-in-class comfort and performance, boasting Malibu's most extravagant cabin, a pickle-fork bow with ladder, SeaDek flooring, heated helm seat, five-outlet cabin heater, hot-water shower and an exclusive walkthrough design with Power Billet Wind-Block Door. The M235 features the super-deep Wake Plus Hull, supercharged Monsoon 575, Quad Hard Tank Ballast System, Plug 'n Play soft-bag system and Malibu's exclusive Integrated Surf Platform with Power Wedge II, Surf Gate and Surf Band for the most customized and extreme wave and wake-creation capabilities.

- World's ultimate watersports towboat
- Seating for 17
- Exclusive extra-deep Wake Plus Hull
- Quad Hard Tank Ballast System
- Standard Monsoon 575 engine
- Rear-facing WakeView bench seat
- Luxury cabin with Plush Wraparound Upholstery
- Transom Walkthrough with Power Billet Wind-Block Door
- Folding Bow Ladder
- G4 Tower
- Viper II Command Center
- Malibu MultiZone RGB Lighting Controller
- 4,000 Watt Wet Sounds Audio System with two 12-inch subwoofers
- Transom stereo remote
- Heated helm seat
- Five-outlet cabin heater
- Hot-water shower
- Malibu branded Yeti hard cooler
- Billet features throughout, including grab handles, glove box, walkthrough storage, trash can and vent covers
- Rear View Camera
- Pistol bimini
- REV10 Tower Speakers
- Integrated Surf Platform with Power Wedge II, Surf Gate & Surf Band
- Plug 'n Play







# M235







# MALIBU TRAILERS

Since we began making custom trailers, more than 95 percent of our customers have ordered a Malibu Trailer with their new towboat. That's because Malibu Trailers are specifically engineered to accommodate the clearance, size and weight of a Malibu boat.

Every Malibu Trailer is handcrafted in America at our factory in Loudon, Tenn., with the highest quality materials and leading-edge manufacturing processes. They feature premium industry-standard steel for all frame parts and clean, consistent welds. We confidently back Malibu Trailers with a 5-year limited warranty.

Now, you can make your Malibu Trailer as distinctive as the boat it's pulling, with options such as two-tone paint, Rockstar wheels, stainless steel fenders, runway lighting and more.

- Premium industry-standard steel for all frame parts
- Jigs and fixtures used to create consistent weld, axle and crossmember placement
- Bow-stand brace features bow step and Malibu emblem to match fender color when you order two-tone paint
- Fender steps fully welded to trailer frame
- Rear corners, where main frames meet the prop guard, are mitered rather than butt-welded for cleaner, stronger welds—eliminates need for additional plate welded to the end of the main frame
- On tandem/tri-axle trailers, fenders have a center support brace to prevent bowing when stepped on
- Top-quality urethane-based DuPont paints and primer

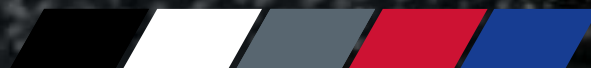






## G4

The gold standard for performance towers, the G4 is precision-crafted from aerospace aluminum, and features an internal honeycomb structure for incredible strength. It's maneuverable enough for one person to lift, lower and latch. At night, integrated LED lights illuminate the tower with a high-tech glow.



## G3.5

The high-strength Malibu G3.5 tower features an easy latching tower lock, powerful LED lighting, stainless-steel hoops and anodized, power-coated components. Like our boats and trailers, we handcraft Malibu G3.5 Towers at our factory with the highest degree of detail.

# TOWERING PERFORMANCE

M235 RGB Tower Speakers



REV10 Speakers



LED Tower Lighting



Optional Ski Rack



# FEATURED OPTIONS

- 1 - WakeView Bench Seat
- 2 - Rear View Camera
- 3 - Sport Dash Analog Control
- 4 - REV10 Speakers
- 5 - MultiZone RGB Lighting Control (only available on M235)
- 6 - Soft Grip Flooring
- 7 - Command Wheel
- 8 - Extended Bimini
- 9 - Clamping Board Racks
- 10 - MultiZone Audio Controls

1

3

7

8











# MONSOON POWER

Malibu's Monsoon Engines are specifically engineered to deliver the incredible torque required to propel a ballasted towboat at watersports speeds with consistency. Most Malibu boats come standard with the Monsoon 410\*, while the 24 MXZ and 25 LSV are equipped with the 450 ft-lbs. engine. Meanwhile, the M235 is outfitted with the supercharged Monsoon 575.

\*The Monsoon 450 and 575 are optional on specific models.

# LEGENDARY CRAFTSMANSHIP IN EVERY BOAT

Every Malibu Boat sold in every country throughout the world is meticulously handcrafted by highly trained technicians at our factories in Loudon, Tenn., and Albury, New South Wales, Australia. From spraying the outer gelcoat to laminating layer upon layer of fiberglass to installing and polishing interior and exterior hardware to hand-stitching and fitting the upholstery, a dedicated team of exceptional boat-builders crafts every Malibu—by hand.

We conduct detailed quality control inspections after every step in the production line, and we lake-test all boats on site. Our goal is to ensure that your Malibu leaves the factory in as perfect condition as human hands can produce.



Type of Warranty	Full Factory 5 Years
Powertrain	5
Components	5
Interior/Upholstery	5
Audio	5
Gel Coat	1





## MALIBU V-DRIVE

Malibu has used V-Drive propulsion for more than 20 years, because it's the safest and most stable configuration for towboats and riders. On a V-Drive, the propeller is located under the boat, while traditional inboard and outboard engines place the prop at the rear of the boat, perilously close to riders. In addition to its safety advantages, the Malibu V-Drive delivers the stable tracking of inboard running gear.



## **PATENTED CHASSIS PERFORMANCE**

The patented Fiberglass Engine Chassis System (FibECS) is one of Malibu's most important structural innovations. Though it rests unseen at the core of the boat, FibECS contributes greatly to the smooth, vibration-free ride you will experience in your Malibu boat. Through-bolting the engine to the FibECS spar makes a stronger hull, and its molded air induction system directs fresh air to the engine intake for optimal performance.

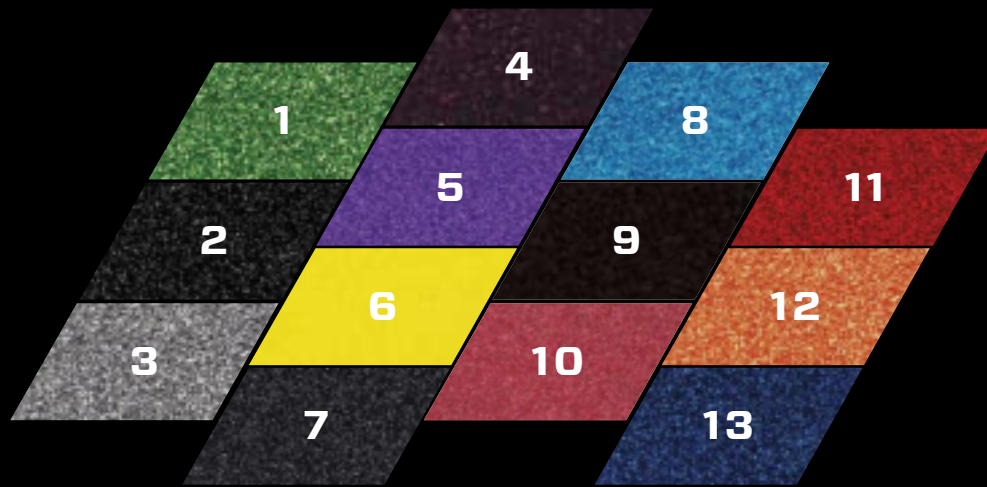


## HIGH IN FIBER

Malibu creates the strongest hulls in the towboat industry by using the highest grade materials and the most complex application protocols. Our proprietary hand-rolled skin coat process promotes a cleaner, more precise fit and finish than our competitors. In addition, we reinforce each hull with more high-durability fiberglass material for a quieter, smoother ride with greater stability.

# METALLIC COLOR OPTIONS

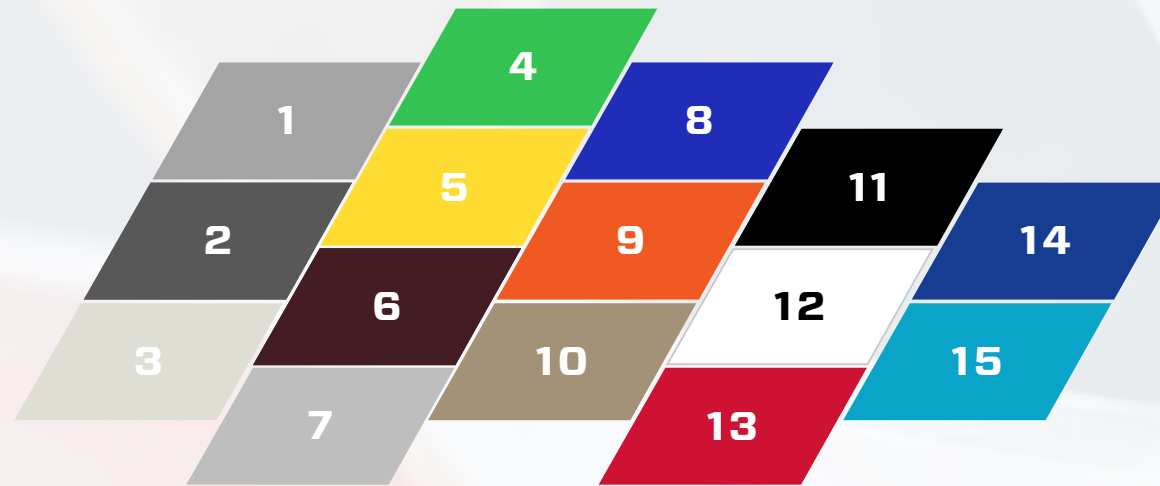
Malibu's exclusive Build-A-Boat tool lets you customize your boat's gel coat and vinyl. With 13 metallics and 15 solids to choose from, your options are almost limitless.



- |                                 |                               |
|---------------------------------|-------------------------------|
| 1. Malibu Green Metallic        | 8. Stratosphere Blue Metallic |
| 2. Black Metallic               | 9. Mocha Bronze Metallic      |
| 3. Machine Silver Metallic      | 10. Pink Diamond Metallic     |
| 4. Cherry Wine Metallic         | 11. Crystal Red Metallic      |
| 5. Purple Metallic              | 12. Hot Orange Metallic       |
| 6. Sunny Summer Yellow Metallic | 13. Dark Blue Metallic        |
| 7. Gunmetal Charcoal Metallic   |                               |

# COLOR OPTIONS

Go classic, go wild, go any way you want--it's your choice. And don't forget the possibilities of a custom Malibu trailer. A two-tone trailer with metallic steps and fenders is available for every model.



1. Light Graphite

2. Charcoal

3. Sandstone

4. Malibu Green

5. Sunny Summer Yellow

6. Cherry Wine

7. Moonbeam

8. Midnight Blue

9. Hot Orange

10. Driftwood

11. Ebony

12. White

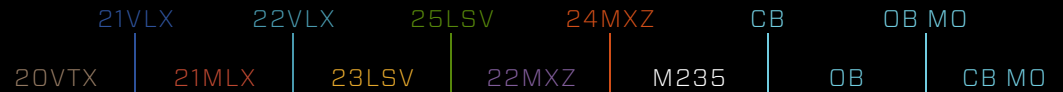
13. Indy Red

14. Dark Blue

15. Vapor Blue

# STANDARD PACKAGES + OPTIONS

RESPONSE



## ENGINES

Wakesetter Monsoon 410 6.2L	STD	STD	STD	STD	STD	N/A	STD	N/A	N/A	N/A	N/A	N/A	N/A	
Wakesetter Monsoon 450 6.2L	OPT	OPT	OPT	OPT	OPT	STD	OPT	STD	OPT	OPT	N/A	N/A	N/A	
Wakesetter Monsoon 575 6.2L Supercharged	N/A	N/A	N/A	OPT	OPT	OPT	OPT	OPT	STD	N/A	N/A	N/A	N/A	
PCM 409 6.0L	N/A	N/A	N/A	N/A	N/A	N/A	N/A	N/A	N/A	N/A	STD	STD	STD	STD
PCM 450 6.0L	N/A	N/A	N/A	N/A	N/A	N/A	N/A	N/A	N/A	N/A	OPT	OPT	OPT	OPT

## ENGINE OPTIONS

Closed Cooling	STD	STD	STD	STD	STD	STD	STD	STD	STD	STD	N/A	N/A	N/A	N/A
Surfpipe	OPT	N/A	N/A	OPT	OPT	OPT	OPT	OPT	STD	N/A	N/A	N/A	N/A	
Stainless Tip Exhaust	OPT	N/A	N/A	OPT	OPT	OPT	OPT	OPT	N/A	OPT	OPT	OPT	OPT	
Silent Tip Exhaust	N/A	N/A	N/A	N/A	N/A	N/A	N/A	N/A	N/A	OPT	OPT	OPT	OPT	
Flush Kit - Transom Install	OPT	OPT	OPT	OPT	OPT	OPT	OPT	OPT	STD	OPT	OPT	OPT	OPT	
High-Altitude Torque Prop	OPT	OPT	OPT	OPT	OPT	OPT	OPT	OPT	OPT	OPT	OPT	OPT	OPT	
Speed Prop	OPT	OPT	OPT	OPT	OPT	OPT	OPT	OPT	OPT	OPT	OPT	OPT	OPT	
SRP Saltwater Pkg	OPT	OPT	OPT	OPT	OPT	OPT	OPT	OPT	OPT	OPT	N/A	N/A	N/A	
Shaft Seal - Water-Cooled	STD	STD	STD	STD	STD	STD	STD	STD	STD	STD	STD	STD	STD	
Heater - 2 Outlets	OPT	OPT	OPT	OPT	OPT	OPT	OPT	OPT	N/A	OPT	OPT	N/A	N/A	
Heater - 3 Outlets	OPT	N/A	N/A	OPT	OPT	OPT	OPT	OPT	N/A	OPT	OPT	OPT	OPT	
Heater - 5 Outlets	N/A	N/A	N/A	N/A	N/A	OPT	N/A	OPT	STD	N/A	N/A	N/A	N/A	
Shower - Hot Water	OPT	N/A	N/A	OPT	OPT	OPT	OPT	OPT	STD	OPT	OPT	OPT	OPT	

## STEREO COMPONENTS

Satellite Radio - Sirius	OPT	OPT	OPT	OPT	OPT	OPT	OPT	OPT	STD	OPT	OPT	OPT	OPT
Wet Sounds Stereo	OPT	OPT	OPT	OPT	OPT	OPT	OPT	OPT	STD	OPT	OPT	OPT	OPT
Transom Stereo Remote Control	OPT	OPT	OPT	OPT	OPT	OPT	OPT	OPT	STD	OPT	OPT	OPT	OPT
12" Wet Sounds Subwoofer (w/ Amp)	OPT	OPT	OPT	OPT	OPT	OPT	OPT	OPT	OPT	N/A	N/A	N/A	N/A
2 - 12 in subs	N/A	N/A	N/A	N/A	N/A	N/A	N/A	N/A	STD	N/A	N/A	N/A	N/A

## TOWERS & ACCESSORIES

TXi Tower (White, Indy Red, Dark Blue, Charcoal, Black)	N/A	N/A	N/A	N/A	N/A	N/A	N/A	N/A	N/A	OPT	OPT	OPT	OPT
G3.5 Latching Tower	STD	STD	STD	STD	STD	STD	STD	STD	N/A	N/A	N/A	N/A	N/A
G4 Tower	OPT	N/A	N/A	OPT	OPT	OPT	OPT	OPT	STD	N/A	N/A	N/A	N/A
Color - Tower Upgrade (White, Indy Red, Dark Blue, Charcoal, Black) both towers	OPT	OPT	OPT	OPT	OPT	OPT	OPT	OPT	OPT	OPT	OPT	OPT	OPT
PTM 14" Black Composite Mirror	STD	STD	STD	STD	STD	STD	STD	STD	N/A	STD	STD	STD	STD
PTM Panoramic Tower Mirror 140-degree Billet	OPT	OPT	OPT	OPT	OPT	OPT	OPT	OPT	STD	N/A	N/A	N/A	N/A
PTM Clamping Spinner Slide-Off Board Rack	OPT	N/A	N/A	OPT	OPT	OPT	OPT	OPT	STD	N/A	N/A	N/A	N/A
Spinner Combo Slide-Off Board Rack	STD	STD	STD	STD	STD	STD	STD	STD	N/A	OPT	OPT	OPT	OPT
Slide-Off Waterski Rack (by side or pair)	OPT	OPT	OPT	OPT	OPT	OPT	OPT	OPT	N/A	OPT	OPT	OPT	OPT
G-Force Speakers - Wet Sounds Icon 8 (G3.5/G4, White, Black)	OPT	OPT	OPT	OPT	OPT	OPT	OPT	OPT	OPT	N/A	N/A	OPT	OPT
G-Force Speakers - Wet Sounds Rev 8 w/ Horn (G3.5/G4, White, Black)	OPT	N/A	N/A	OPT	OPT	OPT	OPT	OPT	OPT	N/A	N/A	OPT	OPT
REV10" (4 speakers included)	N/A	N/A	N/A	OPT	OPT	OPT	OPT	OPT	STD	N/A	N/A	N/A	N/A

## WAKE TECHNOLOGY

Ballast Hi Flo - Bow Malibu Launch System	OPT	OPT	OPT	OPT	OPT	OPT	OPT	OPT	STD	N/A	N/A	N/A	N/A
Ballast Hi Flo - Midship Malibu Launch System	STD	STD	STD	STD	STD	STD	STD	STD	STD	N/A	N/A	N/A	N/A
Ballast Hi Flo - Rear Malibu Launch System	STD	STD	STD	STD	STD	STD	STD	STD	STD	N/A	N/A	N/A	N/A
Ballast Hi Flo - Plug 'n' Play Plumbing	OPT	OPT	OPT	OPT	OPT	OPT	OPT	OPT	N/A	N/A	N/A	N/A	N/A
Plug 'n' Play Auto Vents	OPT	OPT	OPT	OPT	OPT	OPT	OPT	OPT	STD	N/A	N/A	N/A	N/A
Manual Wedge	N/A	N/A	N/A	N/A	N/A	N/A	N/A	N/A	N/A	OPT	OPT	OPT	OPT
Power Wedge II (Hydraulic)	OPT	OPT	OPT	OPT	OPT	OPT	OPT	OPT	STD	N/A	N/A	N/A	N/A
Surf Band Wrist Band included with Surf Gate	OPT	OPT	OPT	OPT	OPT	OPT	OPT	OPT	STD	N/A	N/A	N/A	N/A



## COCKPIT OPTIONS

Rear View Camera	OPT	N/A	N/A	OPT	OPT	OPT	OPT	OPT	STD	N/A	N/A	OPT	OPT
Malibu Command Wheel	OPT	N/A	N/A	OPT	OPT	OPT	OPT	OPT	STD	N/A	N/A	N/A	N/A
Power-Adjustable Helm Seat	OPT	N/A	N/A	OPT	OPT	OPT	OPT	OPT	STD	N/A	N/A	N/A	N/A
Reversible WakeView Rear Bench	N/A	N/A	N/A	N/A	OPT	OPT	OPT	OPT	STD	N/A	N/A	N/A	N/A
MallBoost Directional Docking & Maneuvering System	N/A	N/A	N/A	N/A	N/A	N/A	N/A	OPT	N/A	N/A	N/A	N/A	N/A
Depth-Finder Module	STD	STD	STD	STD	STD	STD	STD	STD	STD	OPT	OPT	OPT	OPT
Viper II Command Center 7" Dash Display System	STD	STD	STD	STD	STD	STD	STD	STD	STD	N/A	N/A	OPT	OPT
Viper II Command Center 12.3" Dash Display System	STD	STD	STD	STD	STD	STD	STD	STD	STD	N/A	N/A	N/A	N/A
Sport Dash w/ Analog Control Dial	OPT	OPT	OPT	OPT	OPT	OPT	OPT	OPT	STD	N/A	N/A	N/A	N/A
Seat Bolster - Flip-up (Driver's)	STD	STD	STD	STD	STD	STD	STD	STD	STD	STD	STD	STD	STD
Nonskid - Deck Trac (Complete Deck Kit)	OPT	N/A	N/A	OPT	OPT	OPT	OPT	OPT	STD	OPT	OPT	OPT	OPT
WakeView Seating	N/A	N/A	N/A	OPT	STD	STD	OPT	STD	STD	N/A	N/A	N/A	N/A
Walkover Fill Cushion	N/A	N/A	N/A	N/A	N/A	N/A	OPT	OPT	STD	N/A	N/A	N/A	N/A
Side-mount Cockpit Table	OPT	N/A	N/A	OPT	OPT	OPT	OPT	OPT	STD	N/A	N/A	N/A	N/A
Seat Heater - Driver's	OPT	N/A	N/A	OPT	OPT	OPT	OPT	OPT	STD	OPT	OPT	OPT	OPT
Zero-Off 3 event with 5 inch gage	N/A	N/A	N/A	N/A	N/A	N/A	N/A	N/A	N/A	OPT	OPT	N/A	N/A
Zero-Off 3 event with color display	N/A	N/A	N/A	N/A	N/A	N/A	N/A	N/A	N/A	N/A	N/A	STD	STD
Zero-Off GPS System	STD	STD	STD	STD	STD	STD	STD	STD	STD	OPT	OPT	STD	STD
Navigation-Chart Plotting	OPT	N/A	N/A	OPT	OPT	OPT	OPT	OPT	STD	N/A	N/A	N/A	N/A
Snap-out Carpet Insert	STD	STD	STD	STD	STD	STD	STD	STD	N/A	OPT	OPT	STD	STD
DECKadence Mat	OPT	N/A	N/A	OPT	OPT	OPT	OPT	OPT	N/A	N/A	N/A	N/A	N/A
Soft Grip Flooring	OPT	OPT	OPT	OPT	OPT	OPT	OPT	OPT	STD	OPT	OPT	OPT	OPT

## LIGHTING OPTIONS

Light - Pop-up Bow	OPT	N/A	N/A	OPT	N/A	OPT	N/A	N/A	N/A	N/A	N/A	N/A	N/A
Lights - Docking (Pair, Stainless)	OPT	N/A	N/A	OPT	OPT	OPT	OPT	OPT	STD	OPT	OPT	OPT	OPT
Lights - Transom Underwater (Pair, Blue or White)	OPT	N/A	N/A	OPT	OPT	OPT	OPT	OPT	STD	N/A	N/A	OPT	OPT

## HARDWARE

Telescopic Ladder - Platform	OPT	OPT	OPT	OPT	OPT	OPT	OPT	OPT	STD	OPT	OPT	OPT	OPT
Pull-up Cleats - 2 Pairs	OPT	OPT	OPT	OPT	OPT	OPT	OPT	OPT	N/A	OPT	OPT	OPT	OPT
Pull-up Cleats - 3 pair	N/A	N/A	N/A	N/A	OPT	OPT	OPT	OPT	STD	N/A	N/A	N/A	N/A
Center Pylon	OPT	N/A	N/A	N/A	N/A	N/A	N/A	N/A	N/A	STD	STD	STD	STD
Fire-suppression System	OPT	OPT	OPT	OPT	OPT	OPT	OPT	OPT	STD	OPT	OPT	OPT	OPT
Fender Locks	OPT	N/A	N/A	OPT	OPT	OPT	OPT	OPT	STD	N/A	N/A	OPT	OPT
Battery Charger	OPT	N/A	N/A	OPT	OPT	OPT	OPT	OPT	STD	OPT	OPT	OPT	OPT
Action-Camera Mount	OPT	N/A	N/A	OPT	OPT	OPT	OPT	OPT	STD	N/A	N/A	N/A	N/A
Power Inverter	OPT	N/A	N/A	OPT	OPT	OPT	OPT	OPT	STD	N/A	N/A	N/A	N/A

## MISC OPTIONS

CE Package	OPT	OPT	OPT	OPT	OPT	OPT	OPT	OPT	OPT	OPT	OPT	OPT	OPT
Wash-down Kit (only available w/o rear ballast)	OPT	N/A	N/A	OPT	OPT	OPT	OPT	OPT	N/A	N/A	N/A	N/A	N/A
Life Without Limits Album (Boat Build)	OPT	OPT	OPT	OPT	OPT	OPT	OPT	OPT	STD	OPT	OPT	OPT	OPT
Diamond Multisport Hull	STD	OPT	OPT	OPT	OPT	N/A	N/A	N/A	N/A	N/A	N/A	N/A	N/A

## CANVAS COVERS

Boat Cover - Commercial Sewing (Gray)	OPT	OPT	OPT	OPT	OPT	OPT	OPT	OPT	STD	OPT	OPT	OPT	OPT
Boat Cover - Great Lakes (Gray)	OPT	OPT	OPT	OPT	OPT	OPT	OPT	OPT	OPT	OPT	OPT	OPT	OPT
Tower Bimini - Commercial Sewing w/ Rope Storage (G3.5 Only) top and boot	OPT	OPT	OPT	OPT	OPT	OPT	OPT	OPT	N/A	N/A	N/A	N/A	N/A
Tower Bimini - Commercial Sewing w/ Rope Storage (G3.5 Only) extended Gen 2 surf	OPT	OPT	OPT	OPT	OPT	OPT	OPT	OPT	N/A	N/A	N/A	N/A	N/A
Tower Bimini - Commercial Sewing Gen 2 w/ Rope & Surfboard Storage (G3.5 Only)	OPT	OPT	OPT	OPT	OPT	OPT	OPT	OPT	N/A	N/A	N/A	N/A	N/A
Tower Bimini - Great Lakes with Flip with surf storage (G4 only)	OPT	OPT	OPT	OPT	OPT	OPT	OPT	OPT	OPT	N/A	N/A	N/A	N/A
Tower Bimini - Commercial Sewing Pistol extended with rope and surf storage (G4 only)	OPT	N/A	N/A	OPT	OPT	OPT	OPT	OPT	STD	N/A	N/A	N/A	N/A
Commercial Sewing Bimini Top/Boot with or without TXi Tower	N/A	N/A	N/A	N/A	N/A	N/A	N/A	N/A	N/A	OPT	OPT	OPT	OPT
Great Lakes Bimini Top/Boot with or without TXi Tower	N/A	N/A	N/A	N/A	N/A	N/A	N/A	N/A	N/A	OPT	OPT	OPT	OPT
Commercial Sewing Tournament Bimini	N/A	N/A	N/A	N/A	N/A	N/A	N/A	N/A	N/A	OPT	OPT	OPT	OPT

## TRAILERS

Tandem Axle w/ Brakes	STD	STD	STD	STD	STD	STD	STD	STD	N/A	OPT	OPT	OPT	OPT
TriAxle w/ Brakes	N/A	N/A	N/A	N/A	N/A	OPT	N/A	OPT	STD	N/A	N/A	N/A	N/A
Single Axle	N/A	N/A	N/A	N/A	N/A	N/A	N/A	N/A	N/A	STD	STD	STD	STD

1  
THOMAS DEGASPERI

2  
STACIA BANK

3  
CHAD SHARPE

4  
RAPH DEROME

5  
JEFF LANGLEY

6  
WILL ASHER

7  
OLI DEROME

8  
ROCKER STEINER

9  
DALLAS FRIDAY

10  
BRIAN GRUBB



1

2

3

4

5

6

8

7

9

10

11  
JORDAN WOLFE

12  
COBE MIKACICH

13  
TARA MIKACICH

14  
PARKER SIEGELE

15  
TOSHIKI YASUI

16  
YUN "RUSSELL"  
SANGHYUN

17  
MASSI PIFFARETTI

18  
AMBER WING



11

12

13

14

15

17

16

18











# EXPERIENCE THE MALIBU LIFE

The Malibu experience is different from any other towboat—all it takes is one ride to recognize the superior performance, luxury, quality, technology and American craftsmanship.

That's why we encourage you to schedule a test drive with your local Malibu dealer and discover how our towboats outclass the competition in every area—engineering, design, agility, comfort and wake and surf innovation.







**INFINITE POSSIBILITIES**  
**BRING YOUR**  
**IMAGINATION**

---

IT TAKES DAYS TO HANDCRAFT A MALIBU.  
IT TAKES JUST MINUTES TO DESIGN YOUR OWN AT  
THE ALL-NEW MALIBUBOATS.COM.



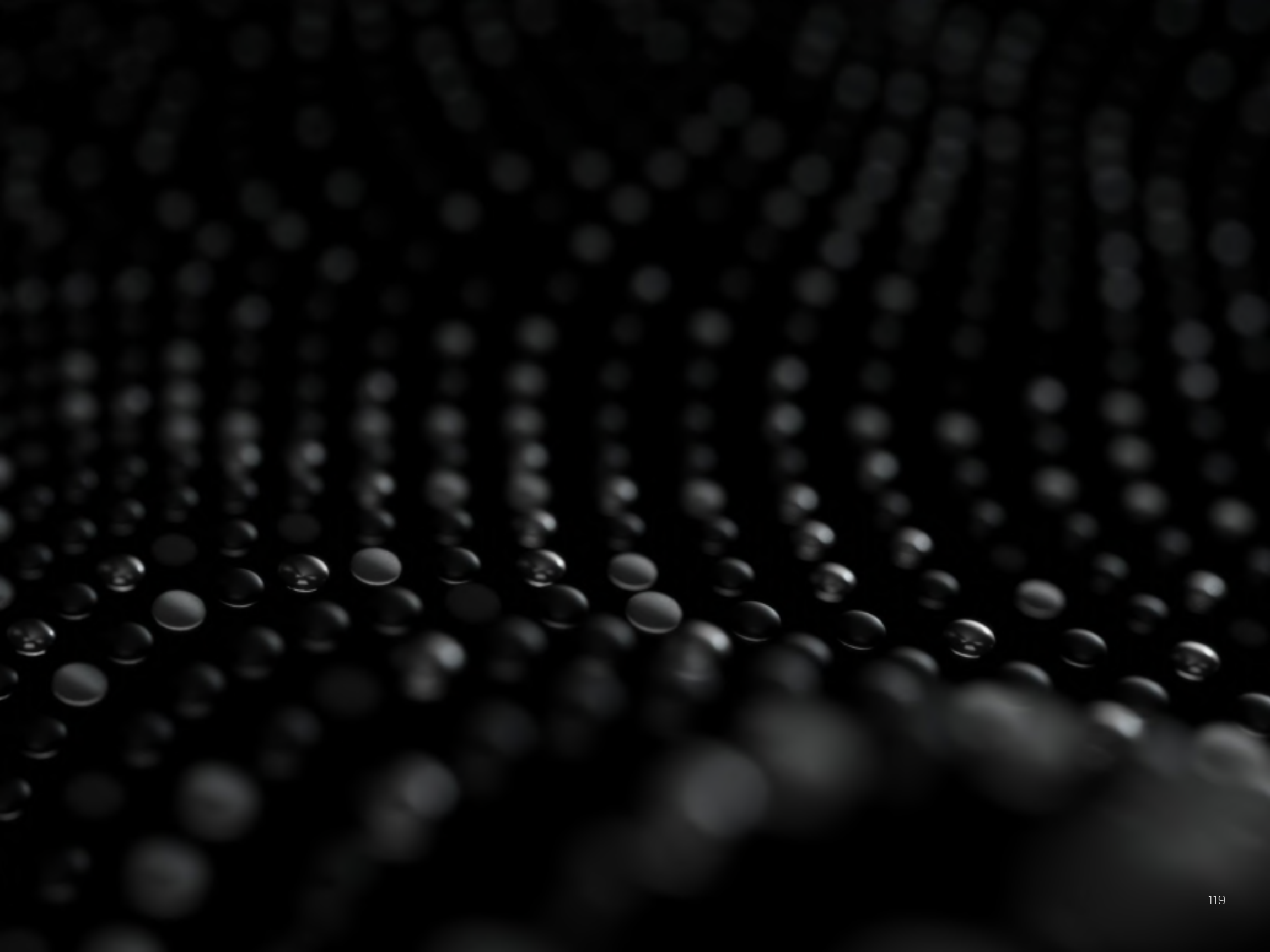
Want to get behind the wheel? Make sure to contact your dealer for demo days.  
#thetruthisonthewater | DESIGN YOUR OWN AT MALIBUBOATS.COM













THE TRUTH IS ON THE WATER

#THETRUTHISONTHEWATER® •   @MALIBUBOATS •  /MALIBUBOATS • MALIBUBOATS.COM